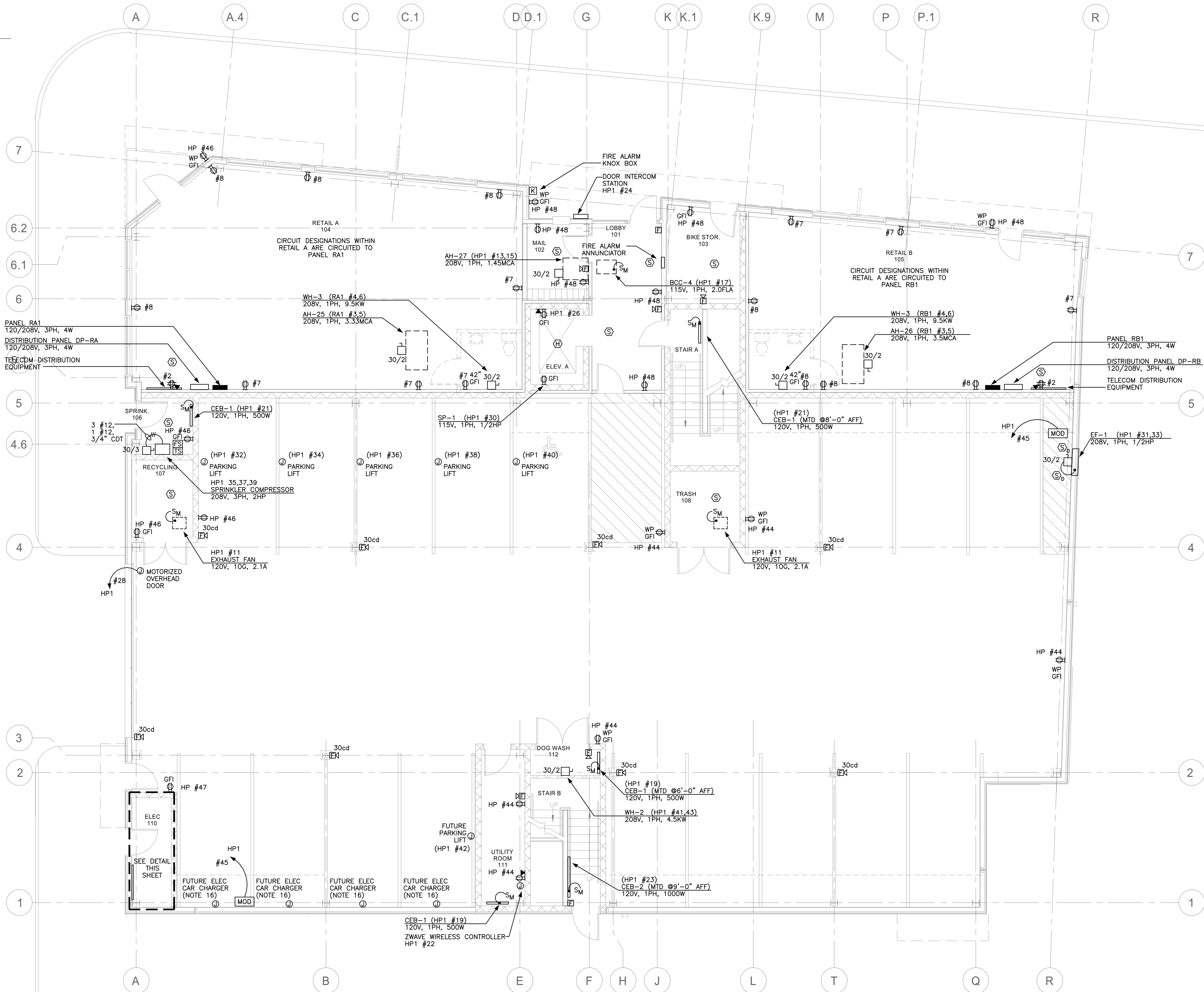
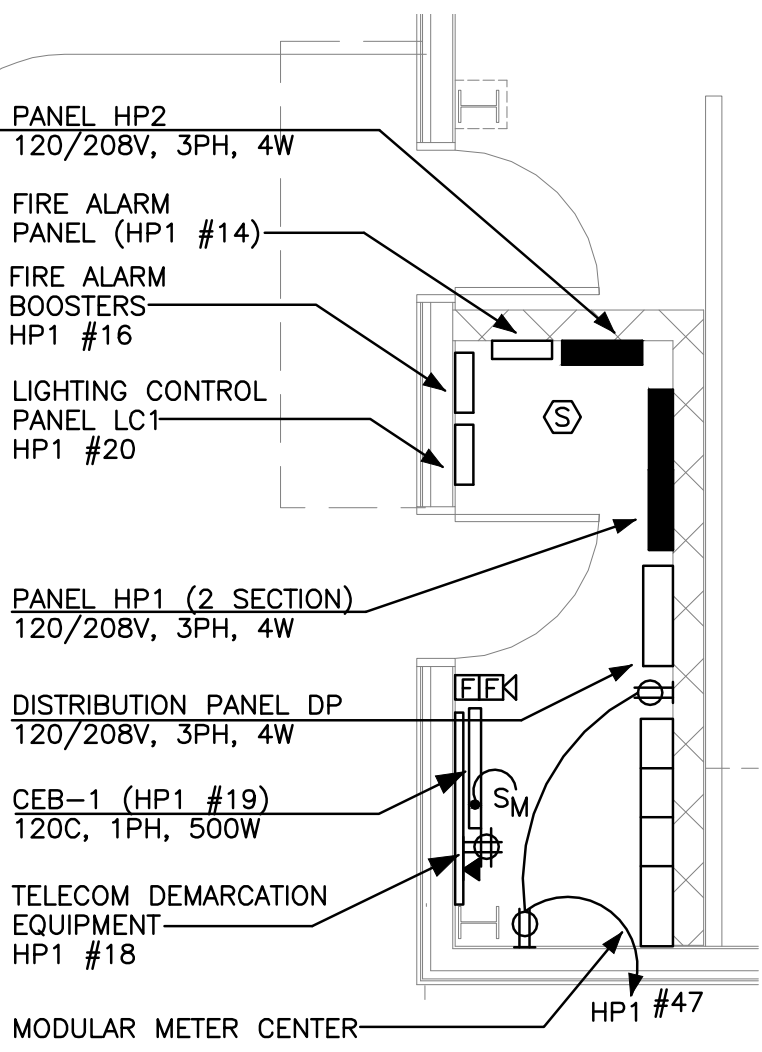




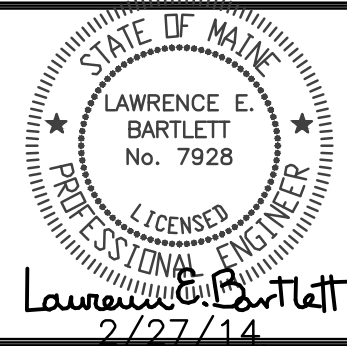
Date: 05/16/14



- PROJECT NOTES:**
- ALL 120V RECEPTACLES IN KITCHENS AND BATHROOMS SHALL BE GFCI RATED EXCEPT FOR THE REFRIGERATOR.
 - MINIMUM CIRCUIT BREAKER SIZE SHALL BE 20 AMP. MINIMUM WIRE SIZE SHALL BE #12 AWG.
 - CONNECT ALL 120 VOLT RECEPTACLE CIRCUITS IN LIVING UNITS TO ARC-FAULT TYPE CIRCUIT BREAKERS IN LOAD CENTERS.
 - ALL RECEPTACLES IN LIVING UNITS SHALL BE TAMPER-RESISTANT.
 - COMBINATION HORN/STROBE/SMOKE DETECTORS SHALL BE PHOTOELECTRIC TYPE.
 - SMOKE DETECTORS AND CARBON MONOXIDE DETECTORS IN LIVING UNITS SHALL BE CIRCUITED TO THE LOCAL LIGHTING CIRCUIT.
 - WHERE STROBE CANDELA RATING IS NOT SHOWN FOR HOUSE FIRE ALARM NOTIFICATION APPLIANCES, STROBE RATING SHALL BE 15cd.
 - INSTALL LOAD CENTERS WITHIN LIVING UNITS WITH THE TOP CIRCUIT BREAKER HANDLE AT 48" AFF. INSTALL NEW BRANCH CIRCUIT PANELS SO THAT THE TOP CIRCUIT BREAKER IS NO HIGHER THAN 6'-0" AFF.
 - COORDINATE THE EXACT LOCATION OF RECEPTACLES IN KITCHENS SO THAT NO POINT ON THE COUNTER IS GREATER THAN 24" TO A RECEPTACLE. PROVIDE AN ABOVE COUNTER RECEPTACLE AT ALL KITCHEN COUNTERS THAT ARE GREATER THAN 12".
 - FOR RECEPTACLE INDICATED IN BEDROOMS, CONNECT THE TOP HALF OF THE RECEPTACLE TO LIGHT SWITCH AS INDICATED. DO NOT CONNECT RECEPTACLES ADJACENT TO EXISTING TELEVISION OUTLET TO SWITCH.
 - WITHIN UNIT KITCHENS PROVIDE THE FOLLOWING AS SHOWN ON PLANS, COORDINATE THE EXACT LOCATIONS WITH ARCHITECT PRIOR TO ROUGH-IN:
 - GAS RANGE 120V, 20A, SIMPLEX RECEPTACLE MOUNT AT 18" AFF WITHIN CABINETRY
 - RANGE HOOD 120V, DIRECT CONNECTION AT HOOD
 - DISPOSER 120V, DIRECT CONNECTION
 - DISHWASHER 120V, DIRECT CONNECTION
 - ELEC OVEN 120V, DIRECT CONNECTION
 - CONV OVEN 120V, DIRECT CONNECTION
 - MICROWAVE MOUNT AT 54" AFF
 - 120V, 20A DUPLEX RECEPTACLE MOUNT AT 6" ABOVE COUNTERTOP
 - DO NOT INSTALL FLUSH MOUNTED BOXES BACK-TO-BACK IN WALLS. PROVIDE A MINIMUM 24 INCH SEPARATION. WHERE 24 INCH SEPARATION IS NOT PHYSICALLY POSSIBLE, APPROVAL FOR CLOSER SPACING SHALL BE OBTAINED FROM THE ARCHITECT PRIOR TO ROUGH-IN. IN SUCH CASES, PROVIDE UL LISTED FIRESTOP PADS FOR BOXES.
 - ENSURE THAT OUTLET BOXES IN COMMON WALLS OF DWELLING UNITS ARE SEALED AGAINST AIR FILTRATION THROUGH THE USE OF CAULKING DRYWALL TO THE BOX AND PROVIDING COVER PLATE GASKETS.
 - UNLESS SPECIFICALLY OTHERWISE NOTED 3-PHASE LOADS SHALL BE CIRCUITED WITH 3 #12, 1 #12GND, IN A 3/4" CONDUIT.
 - JUNCTION BOX FOR FUTURE LIGHT BY OWNER. PROVIDE CONDUIT AND WIRING FROM JUNCTION BOX TO WALL MOUNTED SWITCH AND TO UNIT LOAD CENTER'S LIGHTING CIRCUIT.
 - JUNCTION BOX FOR FUTURE ELECTRIC CAR CHARGER LOCATION. PROVIDE CONDUIT, WIRE AND EMPTY BOXES ONLY. RUN CONDUIT TO ELEC 110, CAP AND LABEL FOR FUTURE USE. MOUNT JUNCTION BOXES AT 24" ABOVE GARAGE FLOOR, VERIFY EXACT LOCATION WITH ARCHITECT PRIOR TO ROUGH-IN.
 - PROVIDE A 120V, 20A, GFI RATED DUPLEX RECEPTACLE AT 42" AFF AT WET BAR AND PROVIDE A SEPARATE 120V, 20A CONNECTION FOR WINE COOLER. COORDINATE EXACT LOCATIONS WITH ARCHITECT PRIOR TO ROUGH-IN.
 - CONNECTION FOR FUTURE FIREPLACE. PROVIDE CONDUIT, AND WIRING FROM JUNCTION BOX TO WALL MOUNTED SWITCH AND TO A SEPARATE CIRCUIT BREAKER IN THE UNIT'S LOAD CENTER. COORDINATE THE EXACT LOCATION OF FIREPLACE CONNECTION AND SWITCH PRIOR TO ROUGH-IN.
 - COORDINATE EXACT LOCATION OF FLOOR BOXES WITH ARCHITECTS DRAWINGS.
 - CIRCUIT ROOFTOP MECHANICAL UNITS OU-1, OU-2, AND OU-3 ON WITH 3 #6, 1 #8 GND, IN A 1" CDT. CIRCUIT ROOFTOP MECHANICAL UNIT OU-4 WITH 3 #8, 1 #10 GND, IN A 3/4" CDT.
 - SEE SHEET E1.05 FOR SINGLE LINE DIAGRAM.
 - PROVIDE A 60A/3P DISCONNECT SWITCH FOR ELEVATOR CONTROLLER ABOVE THE CEILING IN CORRIDOR 400, IMMEDIATELY OUTSIDE THE ELEVATOR. CIRCUIT TO A 50A/3P CB IN PANEL HP1 #38,40,42. ALSO PROVIDE A 120V, 20A RECEPTACLE ABOVE CEILING, ADJACENT TO DISCONNECT SWITCH. CIRCUIT TO HALL RECEPTACLE CIRCUIT HP1 #8. COORDINATE EXACT LOCATION WITH ELEVATOR INSTALLER PRIOR TO ROUGH-IN.



ELECTRICAL 110
1/4" = 1'-0"



Prepared For:
118 on Munjoy Hill, LLC
118 Congress Street
Portland, Maine

Consultant:
Bartlett Design
LIGHTING & ELECTRICAL ENGINEERING
118 Congress Street
Portland, Maine 04101
TEL: (207) 445-3447 FAX: (207) 445-3490

Architect:
ARCHITYPE architects
48 Union Wharf Portland, Maine 04101
(207) 772-6022 ARCHTYPE@ARCHTYPEPA.COM

Project:
118 ON MUNJOY HILL
118 CONGRESS STREET
PORTLAND, MAINE

Revisions:
01/27/14 50% Pricing Set
02/24/14 100% Construction Documents

Date: 27 JAN 2014
Scale: 3/16" = 1'-0"
GROUND FLOOR ELECTRICAL PLAN

E1.01